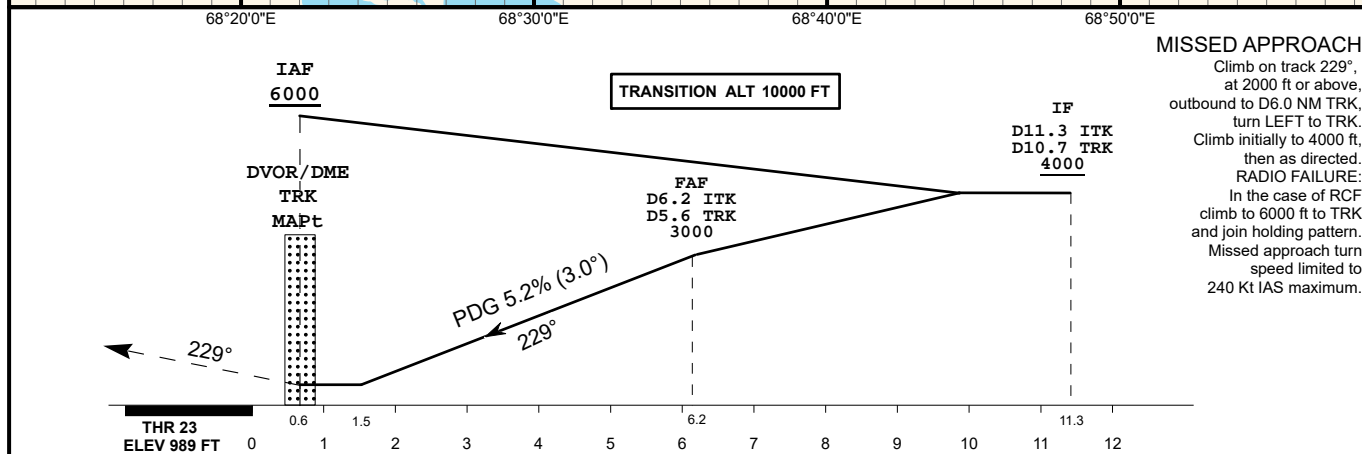
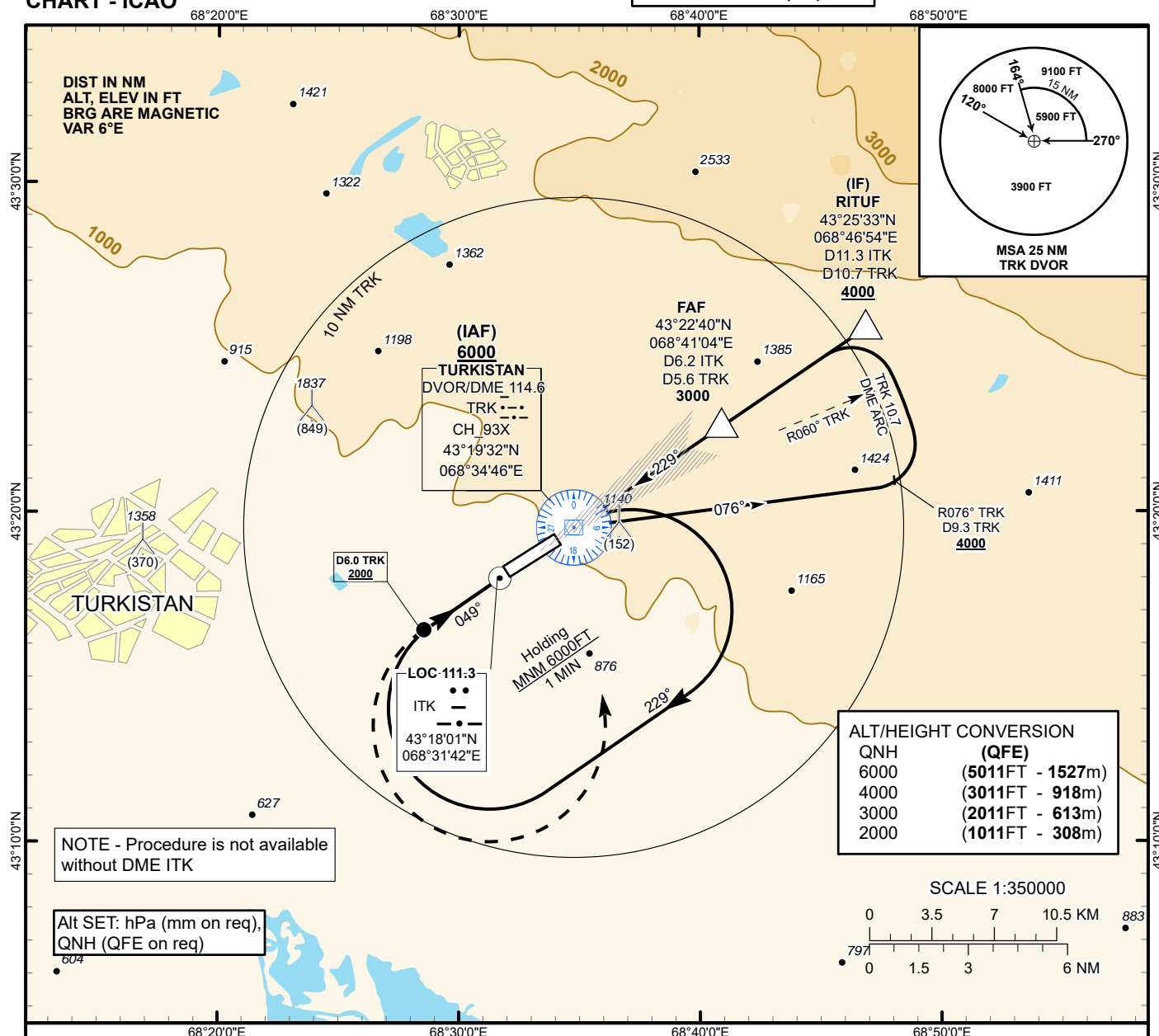


INSTRUMENT
APPROACH
CHART - ICAO

AERODROME ELEV **989 FT**
HEIGHTS RELATED TO
AD ELEV

TURKISTAN TOWER 131.3
TURKISTAN ATIS (EN) 124.4
TURKISTAN ATIS (RU) 118.3

TURKISTAN
LOC/DME Z
RWY 23



Aircraft Category		A	B	C	D	DIST to THR DME ITK	NM	6.2	5.0	4.0	3.0	2.0	1.0
Straight-in Approach OCA/H						DME TRK	NM	5.6	4.4	3.4	2.4	1.4	0.4
	LLZ (GP INOP)	1410(420)				ALTITUDE	FT	3000	2630	2312	1993	1675	1356
						HEIGHT	FT	2011	1641	1323	1004	686	367
						DME ITK ZERO RANGED TO THR RWY 23							
Aerodrome Operating Minima DH ft x RVR(CMV)	LLZ (GP INOP)												
						GS	Kt	80	100	120	140	160	180
						Desc.Rate(5.2%)	ft/min	420	530	640	740	840	950
						FAF-MAPt(5.6NM)	min:sec	3:45	3:00	2:30	2:08	1:52	1:40

TURKISTAN
LOC/DME Z RWY 23 AERONAUTICAL DATA TABULATION

LOC/DME approach to RWY23 from TRK DVOR/DME, RITUF	
Fix/point	Coordinates
TRK DVOR/DME	43° 19' 32.3"N 068° 34' 46.1"E
RITUF (IF) D11.3 ITK, D10.7 TRK	43° 25' 33.4"N 068° 46' 54.4"E
(FAF) D6.2 ITK, D5.6 TRK	43° 22' 40.0"N 068° 41' 04.4"E
THR RWY23	43° 19' 10.27"N 068° 34' 01.98"E
ITK LLZ	43° 18' 00.6"N 068° 31' 42.1"E
Final approach descent angle is 3°	